



DERBYSHIRE CONSTABULARY

Report a
Crime or Incident

Contact
Us Online

Submit footage of
Traffic Incidents

TrackMyCrime

- Home
- Contact Us
- News & Appeals
- Caught on Camera
- My Local Police**
- Safety Advice
- Careers
- About Us

You are here: [Home](#) » [My Local Police](#) » [North Division](#) » [Amber Valley LPU](#) » [Quarndon and Kirk Langley](#)

Print Download



Quarndon and Kirk Langley Safer Neighbourhood Team

Contact Us

Address:
Ripley Police Station, Wyatt's Way,
Ripley, Derbyshire DE5 3SU

Non-emergency number:
101

Message the team

Tweet your team

This Safer Neighbourhood area covers Quarndon, Kirk Langley, Mackworth, Turnditch, Windley, Mugginton and Weston Underwood. It belongs to the Amber Valley Local Policing Unit. The Safer Neighbourhood area for Quarndon and Kirk Langley also encompasses the villages of Kedleston, Turnditch and Windley, as well as covering the rural parts of Mackworth and Markeaton. The area is served by the A6, A52 and A38 trunk roads.

SET THIS AS MY AREA
(this requires a cookie)

[Choose another area](#)

SAFER NEIGHBOURHOOD TEAM SERGEANTS



Sergeant 2701 Mark Weldon

I am Sergeant 2701 Mark Weldon and I am responsible for this Safer Neighbourhood policing team.

I am committed to providing a high quality service to the public by ensuring my teams are visible, approachable and work alongside partner agencies to target problems affecting the local community. My priorities are to reduce anti-social behaviour and crime.

SAFER NEIGHBOURHOOD EVENTS

Find out where and when your Safer Neighbourhood team are holding public events.

CRIME INFORMATION

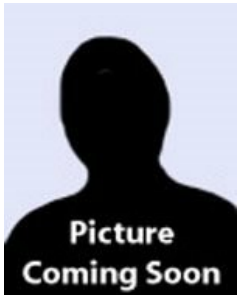


Crime mapping allows us to show you where crime is happening at a local level, so we can better engage

Team Members



PC 14271 Jeannette Gardner



PC 2712 Wendy Wright



PCSO 4628 John Hardy



PCSO 4461 Paula Bennett



PCSO 12715 Scott Hunt



PCSO 12814 Liam Darby

Community News



Fatal RTC on A6 between Allestree and Duffield

25th October 2018



Tickets issued to speeding and unsafe drivers in Quarndon and Weston Underwood

14th May 2015



Sentimental jewellery stolen from house in Quarndon

18th March 2015



Police appeal after cars are damaged in Quarndon

22nd September 2014



Police CCTV van hits the streets of Chesterfield, Bolsover, North East Derbyshire and the Amber Valley

17th July 2014

with our communities and help them determine how best to police the area they live in.

Find out the information about your area on the police.uk crime mapping website.

View all the latest Caught On Camera pictures for Derbyshire.

Your Team on Twitter

[Our current and previous neighbourhood priorities](#)

[How you can take action](#)

These priorities were set by your team following community feedback. Contact your team in person, by phone or online to let them know your priorities.



We want your feedback submit your priorities to the team

Your current priorities for this neighbourhood

We are pleased to report that no priority profiles have currently been raised for the Quarndon and Kirk Langley Safer Neighbourhood Policing Team

Issue was set on 16/11/2017

- ▶ We will continue to carry out patrols throughout the area and work to keep your neighbourhood safe.
- ▶ We continue to work with partner agencies including local parish councillors, Neighbourhood Watch, the Amber Valley Community Safety Partnership, and local residents to identify issues or concerns.
- ▶ If you have any concerns or feel there is something we could target in your area please contact us by calling 101, come along to one of our surgeries or attend the next neighbourhood meeting.

Actions and outcomes from previous priorities

Inconsiderate parking and speeding in Quarndon and rural areas

Issue was set on 02/08/2012

- ▶ Increased police patrols
- ▶ Advised drivers of the issue and encouraged them to park responsibly.
- ▶ Appropriate enforcement action taken where necessary
- ▶ Encouraged residents to contact us with any issues or concerns.

Speeding in Quarndon and rural areas

Issue was set on 06/06/2012

- ▶ Increased police patrols and spot speed checks.
- ▶ Enforcement and advice given to motorists where necessary.
- ▶ Set up Community Speed Watch initiative.
- ▶ Liaised with partner agencies to consider changes to road layout and signage.